

0 Founders Court, Delaware, OH

# Development Land Available for Sale or Build-to-Suit

- 16.018 ± acres available immediately
- Up to three lot size configurations available; 5.90 ac, 10.30 ac & 16.018 ac
- Shovel ready site with all utilities in-place
- Zoned M-1 for Light Manufacturing
- Class A industrial park setting with unmatched corporate neighbors
- Adjacent to Delaware Municipal Airport (DLZ)
- Delaware County Parcel I.D. #:41922002005008
- Incentives available for qualifying projects
- Call for Pricing



16 ± acres available for sale or  
build-to-suit

## Contact Us

**Jonathan Schuen, SIOR**  
DIR +1 614 437 4495  
Columbus, OH  
jonathan.schuen@colliers.com

**Michael Linder, SIOR**  
DIR +1 614 410 5628  
Columbus, OH  
michael.linder@colliers.com

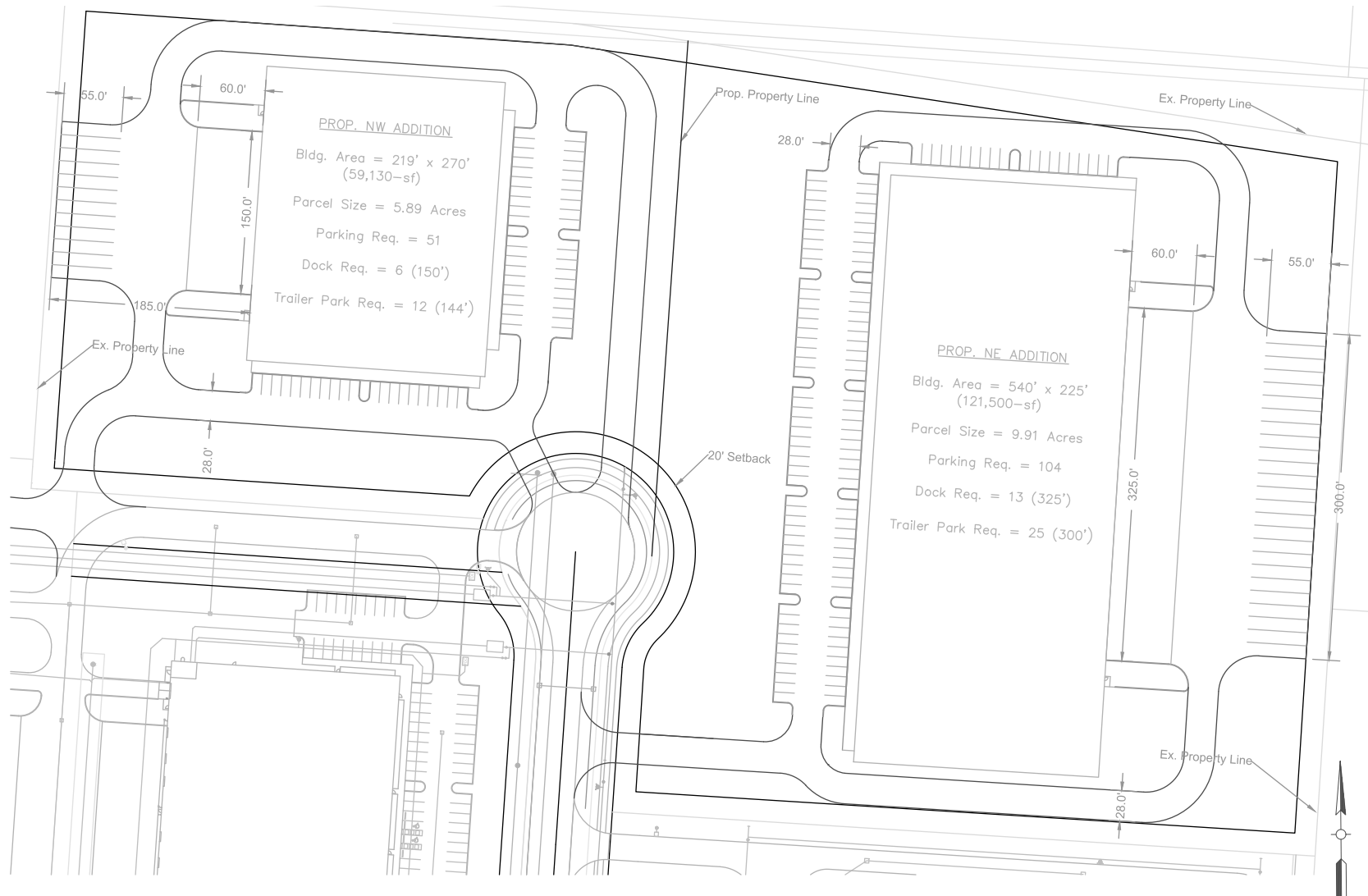
**Shane Woloshan, SIOR**  
DIR +1 614 410 5624  
Columbus, OH  
shane.woloshan@colliers.com

**Joel Yakovac, SIOR**  
DIR +1 614 410 5654  
Columbus, OH  
joel.yakovac@colliers.com



# Site Configurations

This site is divisible to 5.9 ± acres. Up to three lot size configurations available; 5.90 ac, 10.30 ac & 16.018 ac.



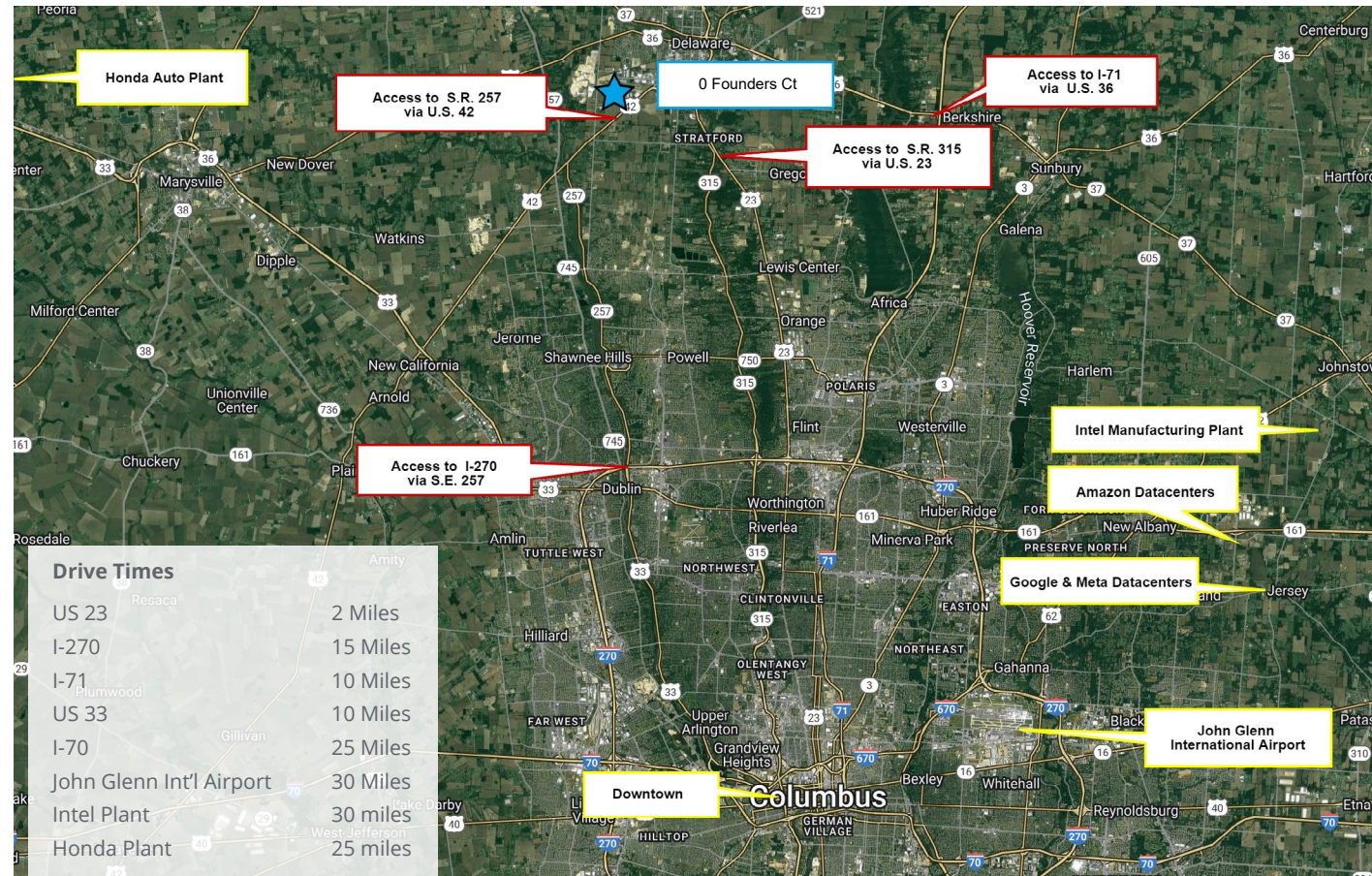
*\*These are sample lot lines and are solely for conceptual purposes. Not limited to this configuration.*



# Area Access & Amenities

## About Delaware, OH

- Central Ohio is located within a 10-hour drive of 46 percent of the country's population, making it the epicenter of the U.S. population and a point of access for businesses and consumers
- Representing 22.9% of the state's overall growth over the past decade, Delaware County has been recognized as the state's fastest growing county year over year
- Ranked #1 county in Ohio per capita income
- Ideally situated just north of our state's capital Columbus, Delaware County is centrally located with quick, easy access to both rural and urban areas, several airports, railways, and major interstate highways
- Delaware County is part of the 11-county Columbus Region, one of the most dynamic and diverse metropolitan areas in the United States



Source: <https://economicdevelopment.co.delaware.oh.us/>

The information contained herein was obtained from sources believed reliable; however, Colliers International makes no guarantees, warranties, or representations as to the completeness or accuracy thereof. The presentation of this property is submitted subject to errors, omissions, change of price or conditions prior to sale or lease, or withdrawal without notice.

Colliers | Greater Columbus Region  
Two Miranova Place | Suite 900  
Columbus, OH 43215  
+1 614 436 9800

